

The Nearly New Shoppe

Consigning & Selling
QUALITY

New and Used Items
Infant to Adult Clothing at Prices to Please



Phone: (406)-256-5363

info@thenearlynewshoppe.com

Store hours: Mon-Sat 10am-5pm

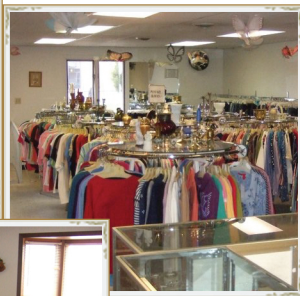
801 14th Street West Billings, Montana

All major credit
cards accepted



www.nearlynewshoppe.com

www.nearlynewshoppe.com



A Special Note

Thank you for visiting the Nearly New Shoppe. We sincerely appreciate your business.

Please understand that the guidelines in this brochure have been instituted to help us offer the highest quality inventory and the best prices possible. In addition, we wish to be able to offer the most efficient service to you, our clients.

General Policy

The Nearly New Shoppe takes women's, men's, and children's clothing. This includes jewelry, purses, belts, shoes and coats. We also take some small appliances, drapery, rugs, bedding, household decorating items and small furniture.

All items must clean, in season and in good condition, (no stains, holes or missing buttons). All items must be in style (no older than 2-3 yrs). Clothing items must be clean, pressed, and on hangers. Hangers are available at the store at no charge.

Consignments will be taken Monday through Friday
by appointment only.

Maximum of 35 items per appointment.

NOTE: The Nearly New Shoppe reserves the right to accept or reject any items brought into the store, at the discretion of store personnel, are based on the condition of the article, present stock

Please do not be offended if we cannot accept some or all of the merchandise you bring in this time. We are limited in space and must select only those items which we feel will sell quickly.

Consignment Policy

Quality guidelines in this brochure apply to all consignments.

Items initially accepted, but later found to be defective, will be pulled from inventory. The consignee will be notified to pick up these items within 3 working days. Items not picked up will be donated.

Consignment duration is 3 months. Any unsold items remain the property of the consignor. We will hold the merchandise for 2 weeks after the consignor is paid. If the merchandise is not picked up by that time, it will be donated.

Items left for consignment that need washing, mending or pressing will be charged to the consignor at the rate of 50 cents per item.

The Nearly New Shoppe is not responsible for items damaged or stolen while on consignment.

Payment for consignments will be made after all items have been sold or 3 months have expired, whichever comes first. One payment will be made per account. You may also use the credit on your account toward store purchases.

Consignor's payment is based on 40% of price the item sold for.

At the end of the consignment time, the consignor is responsible for contacting us to finalize the account and receive entitled payment.



The
Nearly New
Shoppe

www.nearlynewshoppe.com

Make an appointment today!

(406)-256-5365 or info@nearlynewshoppe.com

All major credit cards accepted

